

**Shad€<sup>®</sup>**



**Technology that empowers**



# About us

**Shade6**, a technology and design company that provides creative technology solutions to solve real world problems faced by businesses while enabling their exponential growth.



**Reliable for quality**



**Experience with technology**



**Trusted by many**



## **Mission**

To help people and businesses scale up and accelerate growth by providing them with solutions suited for their needs thereby achieving success, through constant innovation, for all stakeholders including clients, employees and the society at large.

## **Vision**

To see India on the forefront of technological innovation and empower our society. Innovation is the catalyst that drives us. Our Mantra is to achieve sustainable growth for all our stakeholders.



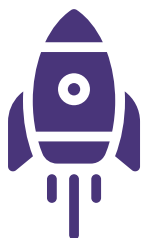
# Alliances





# Who we are?

**Shade6** is a technology and design company that serves customers of three distinct categories:



## Start-ups

We help start-ups by providing them quality services at affordable prices. We provide full IT support for start-ups and become a part of their growth story.



## NGOs

It is our earnest endeavour to help those that help others. We provide IT support to NGOs that need them at low cost.



## Enterprises

Our software solutions are aimed at enterprises who are looking at software solutions for better ROI and operational efficiencies.

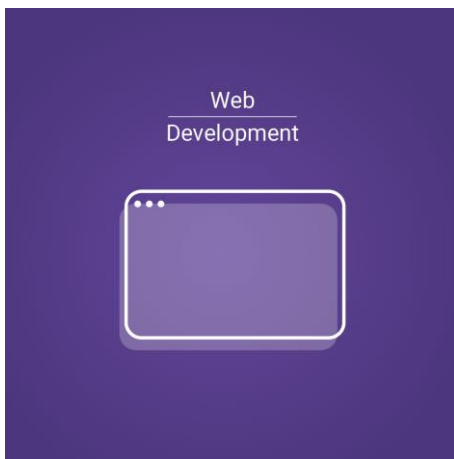


# Service Areas

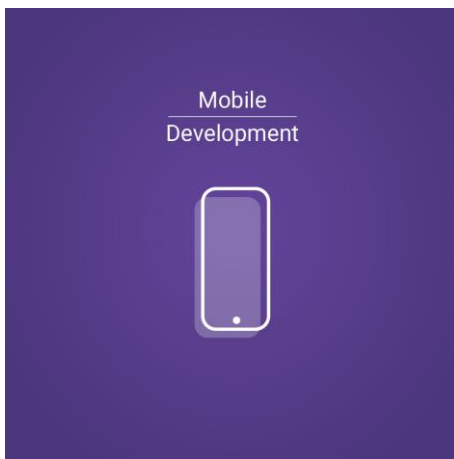
- 1. Custom Software Development**
- 2. ERP/CRM**
- 3. Cloud Computing**
- 4. Our Products**



# Our software services



Our web development expertise includes creating web applications using both the **LAMP/LEMP** stack and the **MEAN** stack. We have excelled in both front-end and back-end development over the years and are able to create enterprise level complex web applications. We work on the **agile** development process following the Planning > Wireframing > Designing > Front-end > Back-end > Testing > Deployment process.



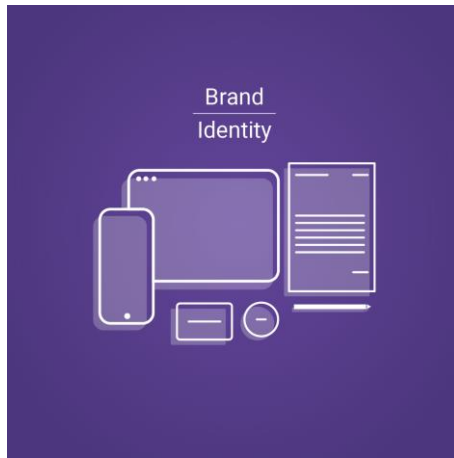
Our mobile applications development includes developing for Android and iOS platforms. **Enterprise mobility** is an important part of our software solutions gamut. We help enterprises and start-ups alike to develop and deploy software solutions on mobile devices to get their **product** out in the market or help the organisation achieve **efficiency** through **automation**. A similar approach as of web development is employed here by following the full software development lifecycle process.







# Our design solutions



Brand identity is integral to any business especially a new start-up. Our services to start-ups include providing a brand identity to them by which they will be known and established in the world around. Branding of **logos, stationery** and **design language** is the first step to creating a new company or product.



UI/UX is the first step of actual development of a software product. Through impeccable design comes awesome user experience. This helps in better engagement with the product and customer retention. UI/UX has become the most important part of a software product today. Hence, the focus on that is as important as the product itself. Our designers have consistently rolled out designs that have been accepted by the users.





# Business Intelligence

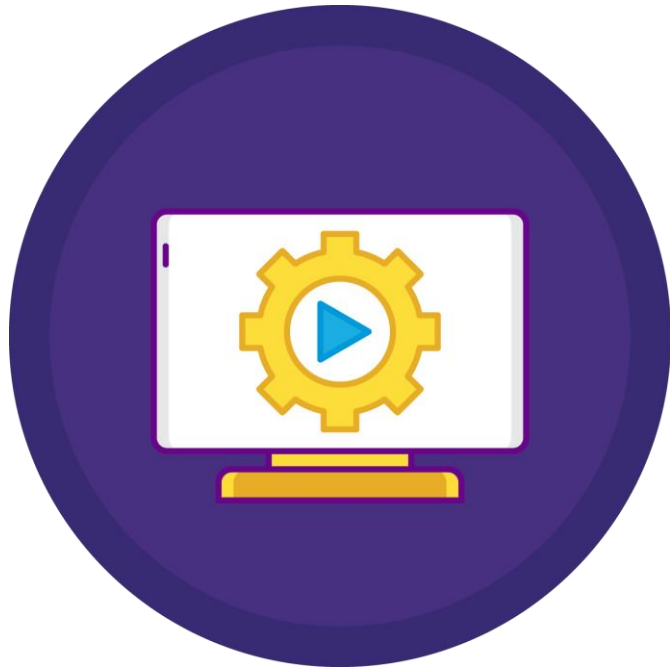


We provide end-to-end BI solutions using databases like SQL and tools such as Tableau/PowerBI/Excel. Our focus market for BI is the **retail** sector.

Retail chains have benefited significantly from Business Intelligence solutions. We help them understand their business dynamics and provide **analysis** for achieving higher growth trajectory. Our uncompromising effort into research and analysis of data is trusted by start-ups and mature firms alike. We offer full stack BI solutions from **data collection, data warehousing** to **data analysis**. With the help of modern tools and custom made algorithms, we are able to analyse and provide **BI reports** that are highly insightful.



# Robotic Process Automation



Manpower is more expensive and should be used for managing rather than doing. This is the mantra behind our RPA services.

We help companies decrease cost by replacing humans in redundant and repetitive tasks with machines. Such automation provides better efficiency and frees up resources which can be used in better productive jobs or managerial jobs instead. RPA has helped companies increase profitability by over 15% through cost cutting or because of better efficiency.



# ERP/CRM



**ORACLE** NETSUITE

With scaling up your business comes a myriad of problems. One of them being managing operations and maintaining transparency at the same time. ERP systems are used by organizations to help manage daily operations. They quickly become the soul of the organization and even a few minutes of its failure translates into hundreds of thousands of dollars in lost revenue.

We at Shade6 work closely to understand your business and implement the right ERP and CRM solution for your organization. These tools empower the people working for you to concentrate on business without worrying about failure and deliver value to clients.



# Cloud Computing



**Shade6** cloud services helps accelerate cloud adoption no matter what your organization size is. Whether it is to migrate your existing infrastructure on the cloud or build a cloud infrastructure from the very beginning, our services will speed up your cloud transformation.

Our expertise on AWS for various services from serverless technologies to server orchestration will help you mitigate business risk by making your services available to your customer 24x7.

Cloud enablement will open a host of opportunities for your organization by being able to reach customers across borders and forgetting to worry about managing servers anymore.



# Infrastructure management

## 01 Server Deployment

Deploy servers for applications and web on Azure or AWS.

## 03 Cloud Services

- E-mailing systems
- Data migration from old server to new server

## 02 Managed IT Services

- Managing full IT such as domains, applications etc.
- SLA based contracts

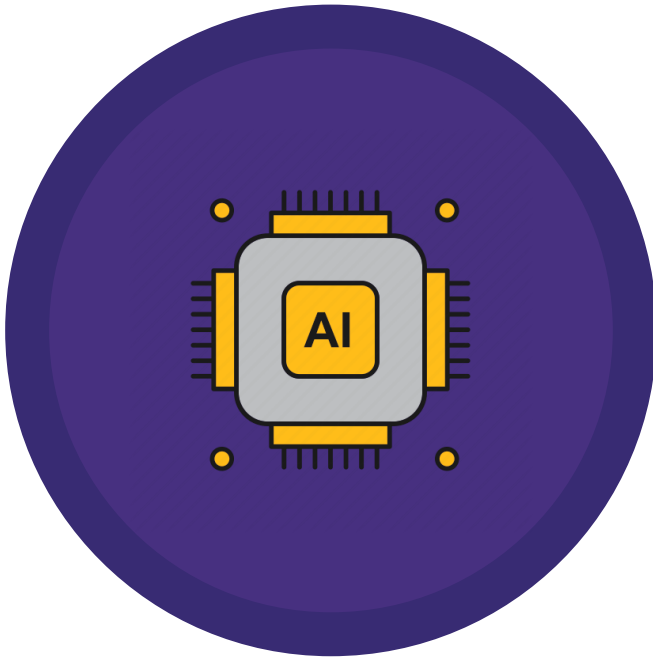
## 04 Offshore Development

Providing resources to clients along with infrastructure.





# Our Products - Chatbot



## **ALURE – AI enabled Language Understanding Response Engine**

We build smart products that brings businesses closer to their customers and help them manage daily operations easily, so they concentrate on growing rather than managing.

Our AI enabled chatbot solutions help businesses engage with customers on channels easily accessible to them such as WhatsApp, Telegram and Facebook messenger thus making their products easily accessible at lesser costs.

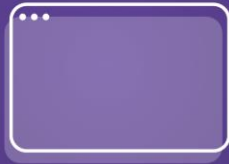
We are currently focused in the following sectors:

- 1) Real-estate
- 2) IT



# Core Capabilities

Web  
Development



Mobile  
Development



## .NET

Solutions using Microsoft  
technology such as .NET  
and SQL server

## Project Management

We have developed a tried and tested project management approach that focuses on key aspects of project management. It is our aim to deliver projects that are transparent, completed on time, within budget and focused on quality.

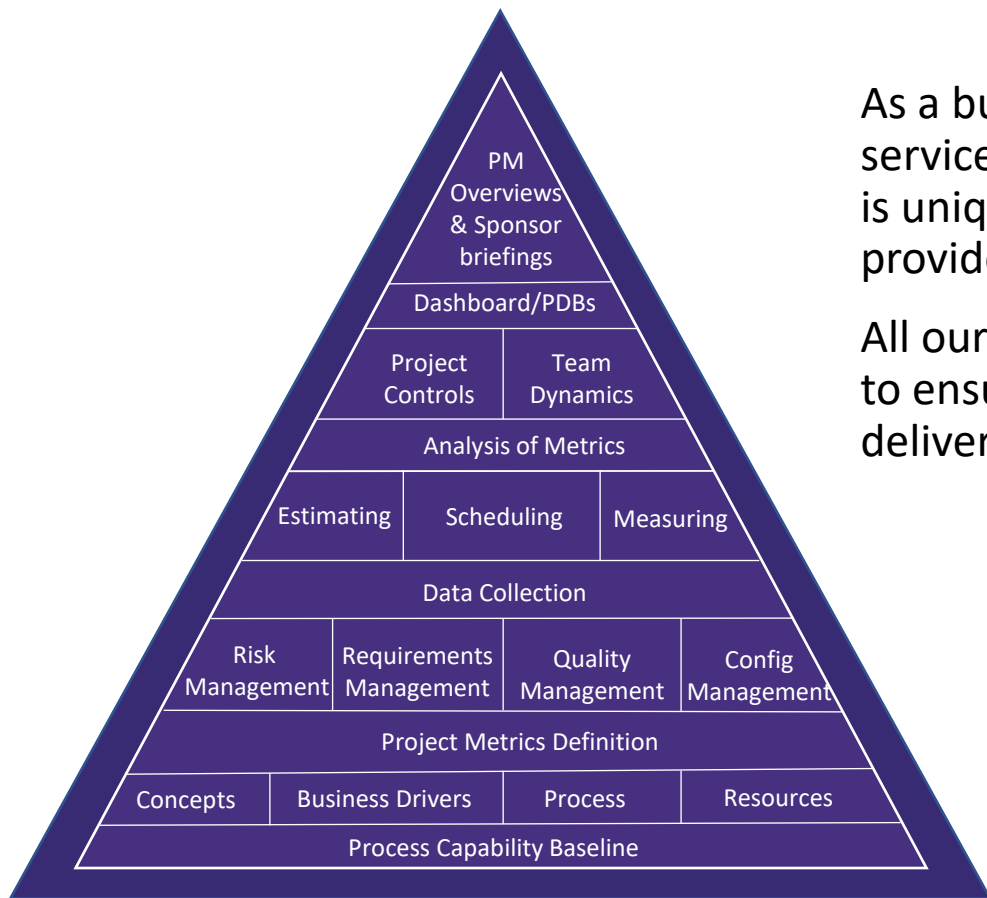
## Quality & Testing

Quality is key to a successful solution and to ensure this our quality and testing team is an integral part of all our solution delivery. From development of test plans and scripts to regression testing, integration testing, solution testing etc., we ensure that we deliver a product that exceeds expectations.





# Project Management

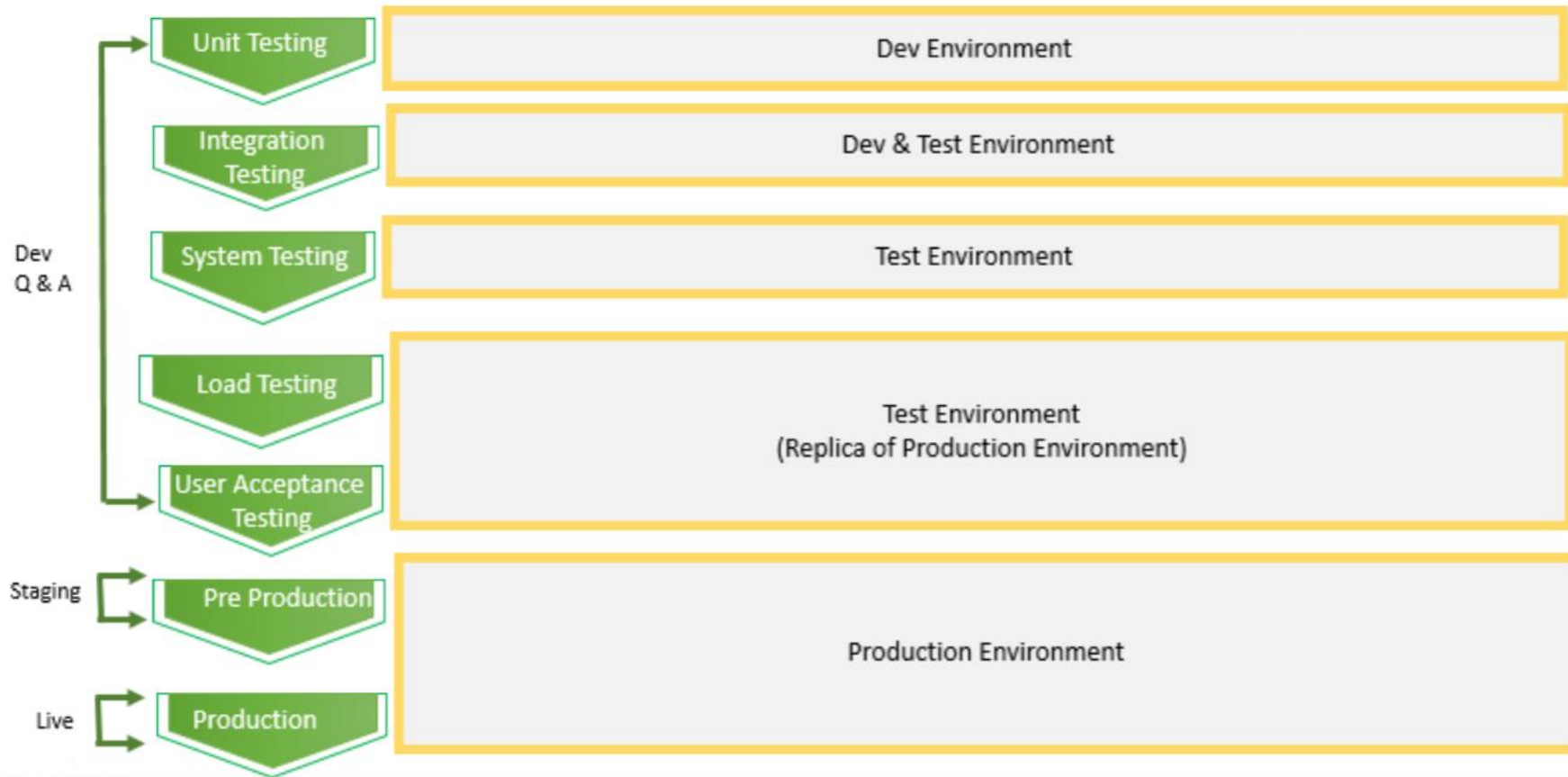


As a business, we are committed to providing the highest levels of service to our customers. Each and every project that we undertake is unique with a dedicated team involved in every step of the way to provide continuity.

All our projects are underpinned by complete project management to ensure that all parts of your installation are transparent and delivered as planned.



# Testing





# Delivery Models

To ensure your project exceeds our expectations we offer customer-centric solutions delivered in multiple delivery models as suited to your organizations needs.

## Offshore Model

- World class infrastructure and quality resources
- Dedicated offshore project managers
- Competitive billing rates resulting in significant cost savings

## On-site Model

- Resource available to work at client's location
- Augmentation of client's teams on short notice
- Clients have more control on project execution

## Hybrid Model

- Resources to augment your own team
- Offshore component offering cost savings
- Shortened project duration as work continues round the clock



# Remote Teams



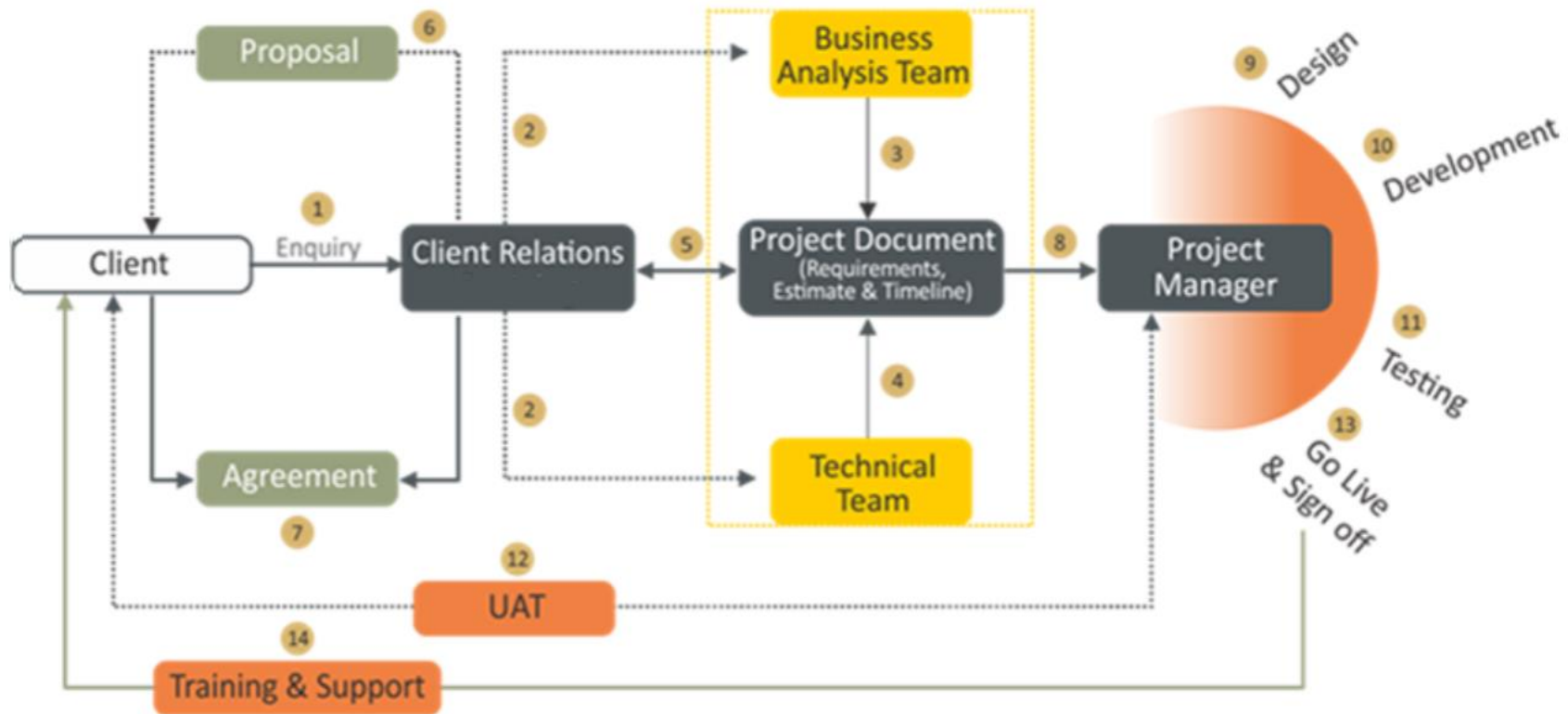
We help you find the right talent for your projects. Remote staffing helps you **reduce IT costs by over 40%**.

We recruit the staff as per requirement. This essentially gives you the right staff with the right experience level and the required skills. The team works from our premises and is dedicated to your company. We provide the project management, training as well as infrastructure for your team in an all-inclusive single price. We also make sure the team is the right cultural fit as per your organization.

These resources can be in addition to your existing on-site team or a complete team *per se*. Creating this off-shore office helps in expanding your footprint, reduce costs substantially and focus on the more important things.



# Engagement Model - Offshore





# Engagement Model - Offshore

## Fixed Bid

- Well defined requirements
- Estimation for the engagement done in terms of deliverables, timelines and costs
- Payment is based on milestones or in fixed intervals
- Risks associated with the project are reduced, both for the client and the organization
- Delivery is on time and within budget

## Time & Materials

- For projects whose requirements change dynamically
- Provides flexibility of varying the size and workloads of the development team assigned to the project
- Total project cost is determined by the amount of time, resources expended and the actual effort towards development

## Effort Based Pricing

- Total cost is a function of the total time taken for the execution for the project and resources used
- Client is given total control over the money spent
- Highly flexible according to the needs of the project

## Milestone Based Pricing

- Project progress is monitored at regular milestones
- Helps in justifying payments based on achievable milestones and visible projects

## Build Operate Transfer

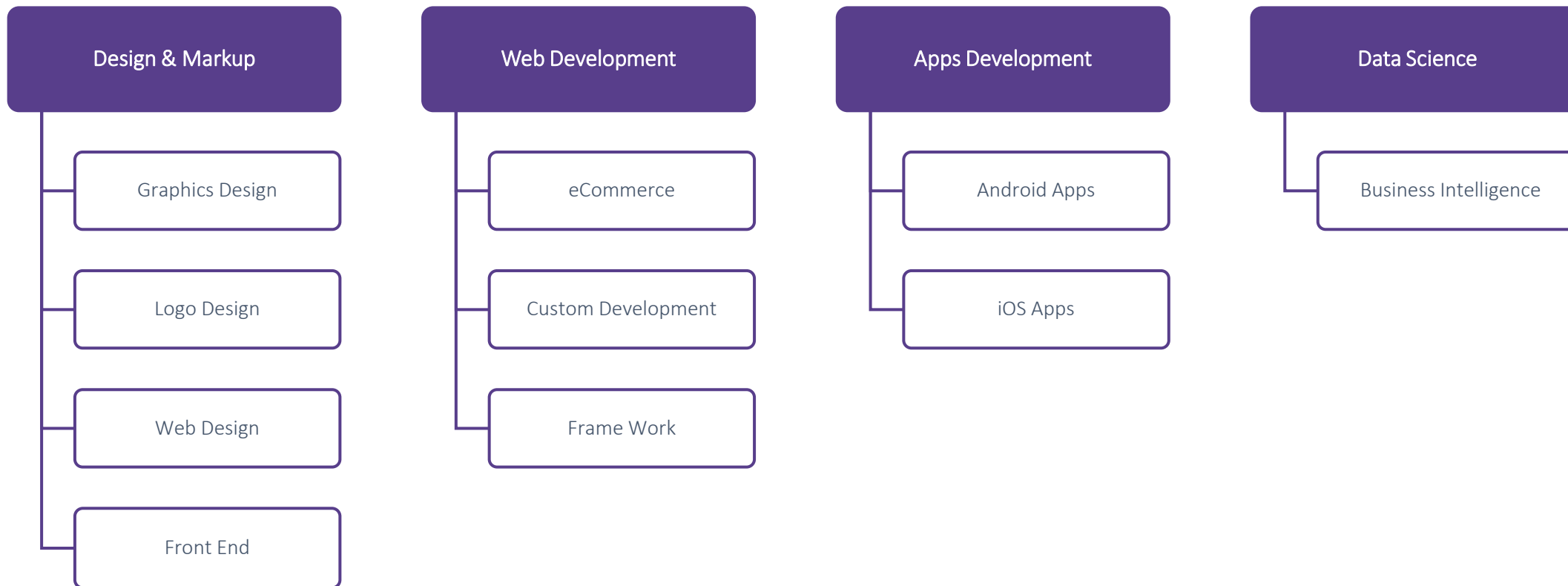
- We help you design, construct and operate a solution

## Offshore Development Centre

- Setup offshore development centre for software development, testing and support activities
- Take advantages of the technological know-how cost advantages and the reduced time to market



# Specialisation





# Technologies

## Artificial Intelligence



## Blockchain



## Mobile Applications



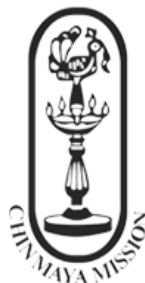
## Web Applications







# Clients





# Case Study 1 - Bizbuddy

## Background

Bizbuddy is a Govt. of Tamil Nadu – Industries department initiative under the ease of doing business scheme. The government wanted to enable large companies from being able to file a grievance by using an online portal and solve all impediments that they may be facing in government dealings.

## Development

The portal was created from ground up. We created the mock-ups first and then the development was done in phases. The portal allows the user to file a ticket and allows the admin to track one. It has all the 30 odd departments of the state on the system and all users are mapped as per their position in the department. The portal also has an escalation mechanism where by the tickets escalated to a higher official on non-performance of the subordinate, up to the CM level, thus bringing in the highest level of transparency within the government.

## Deployment

The web application was deployed by our team on the SDC (State Data Centre). The choice of hardware specification and the OS and DB was all done by our team of experts.



# Case Study 2 - CSC

## Background

CSC (Corporate Sports Club) is a software that helps enable sporting events in corporates. Corporates can create events for any type of sport and employees can join in themselves if they wish to.

## Development

The front-end and back-end was fully coded on a javascript based framework called Vue.js. The back-end has been coded in nodejs with MongoDB as the database.

## Deployment

The web application and mobile application is deployed on a node instance and a MongoDB instance using an Nginx webserver on Microsoft Azure.



# Case Study 3 – W2D

## Background

W2D is an FMCG brand that sells water cans across India to consumer's doorstep. The company was looking into expansion on other FMCG products such as groceries. The goal was to create a platform for their logistics and sales operations.

## Development

The front-end and back-end was fully coded on a PHP framework called Laravel. The CMS was also created from scratch.

## Deployment

The website was deployed on the web server after usability testing and A/B testing.



[Google Playstore link](#)



# Contact Us

## BUSINESS HOURS

Mon – Fri : 10am to 7pm

Sat – Sun : Off

## OFFICE LOCATIONS

Chennai, India

Toronto, Canada

# Shade6

---

 [pankaj@shade6.com](mailto:pankaj@shade6.com)

 +91 98410 24707

 [www.shade6.com](http://www.shade6.com)



Thank you

For your precious time and attention

